

# South Tower Availability

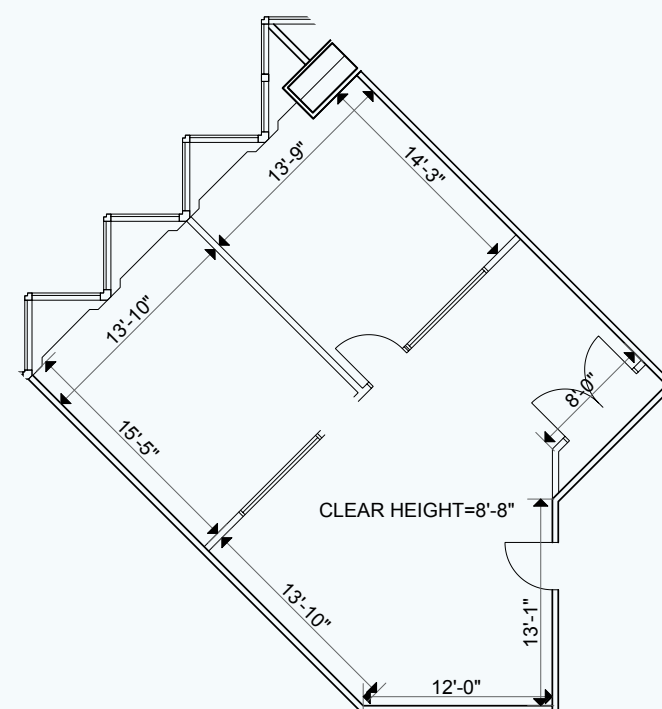
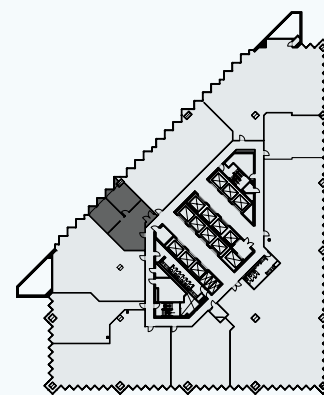
**Suite 2925** 1,157 SF

**Net Rent:** Ask agent directly

**Additional Rent:** \$34.04 PSF (2024)

**Available:** Immediately

The suite is built out with 2 offices and open space.



**Suite 2910 & 2911** 2,901 SF

**Net Rent:** Ask agent directly

**Additional Rent:** \$34.04 PSF (2024)

**Available:** February 1, 2025

The suite is built out with 5 offices, a large boardroom, a kitchenette, a storage room, and open space.

